



[How To Add Cost Basis In Quicken For Mac When Stock Acquired](#)

The screenshot displays the Quicken 'Bills & Income' interface. On the left is a sidebar with account categories and balances. The main area shows a 'Track Bill' dialog box with a search bar for payee names and a grid of 24 popular ebill providers. Below the dialog, a list of bills is visible, including 'Yard Work', 'Home Loan', 'Car Insurance', 'Cell Phone', and 'Car Payment', each with a due date and amount.

Due In	Description	Amount	Action
18 days	Yard Work	\$25.00	Mark As Paid
22 days	Home Loan	\$3,500.00	Mark As Paid
24 days	Car Insurance	\$150.00	Mark As Paid
24 days	Cell Phone	\$90.00	Mark As Paid
24 days	Car Payment	\$300.00	Mark As Paid

[How To Add Cost Basis In Quicken For Mac When Stock Acquired](#)



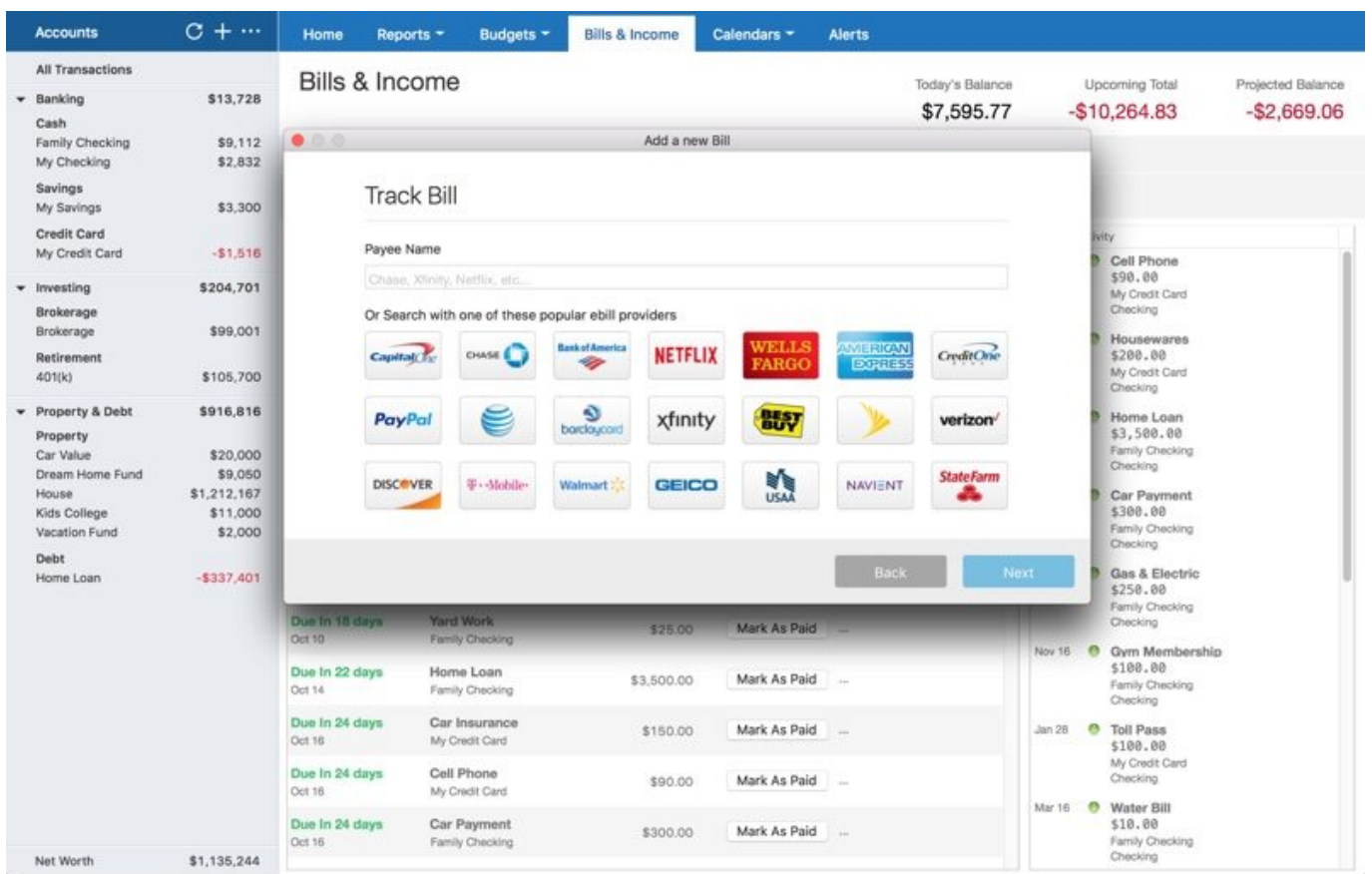
DOWNLOAD

- Monitoring alerts, data downloads, and feature updates are available through the end of your membership term.

Online services require internet access. • If this is a taxable spin-off, Quicken enters one Return of Capital transaction from the parent company and one Buy transaction for the spin-off company, recorded on the day of the spin-off.

[Cara cek kuota smartfren modem wifi](#)

If this is a taxable spin-off, select the check box The parent company determines whether this is a taxable or nontaxable spin-off. [Default Download Folder Kodi Mac](#)



[Live Chat Download Mac](#)

[Photo Booth Mac Download](#)

- If this is a nontaxable spin-off, Quicken enters a pair of transactions for each open lot of the parent company—a Return of Capital transaction from the parent company and a Buy transaction for the spin-off company, recorded with the same date as the open lot. [Memory Clean Dmg Pc](#)

[Lotus Notes Viewer Para Mac](#)

773a7aa168 [Unduh Font Canon Picsay Pro Edit Foto Apk](#)

773a7aa168

[How Do I Remap Windows Keyboard For Mac Useful](#)